



Making a *Difference* . . .
in Health Care

HEALTH CARE
FOUNDATION





Making a *Difference* One Patient at a Time

2009-2010 has been a very exciting year for the Health Care Foundation. With the help of our donors, volunteers and friends, we have been making a significant difference in adult health care for the people of Newfoundland and Labrador.

We are delighted to report that in excess of \$1.5 million was provided to support our five adult hospitals in St. John's. These funds were used in a variety of ways: to support programs; advance medical technology; provide vital equipment; support research and education; as well as provide patient comfort items.

In June of 2009, the Health Care Foundation launched the *Give from the Heart* campaign in support of cardiac care. This multi-year, multi-million dollar program is providing for state-of-the-art advanced medical equipment for our cardiac catheterization (cath) labs and cardiac program. By providing our hospitals with the most advanced cath technology and increasing our capacity through the addition of new cardiac cath labs, we anticipate a direct positive impact through increased access and improved efficiencies for cardiac patients in our province.

This year we installed a new electrophysiology suite in the General Hospital. By having this suite operational, the specialized equipment can assess and diagnose any abnormalities within the electrical conduction system of the heart. This equipment is also used for procedures such as implantable cardioverter-defibrillator (ICD) implants and pacemaker implants. The catheterization and electrophysiology equipment is also utilized by our physicians and staff, as well as students of Memorial

University's Faculty of Medicine for research and education in cardiac disease.

In this fiscal year, we also supported Mental Health, Women's Health, Intensive Care, Oncology, Orthopedics and the *Comfort in Care* program. Additionally, more than \$135,000 was provided in staff scholarships and research grants.

2009-2010 also saw the extremely successful second Health Care Foundation Hospital Home Lottery. Once again, our Lottery sold out in advance of our Early Bird deadline.

Our Foundation graciously acknowledges our many volunteers, including our governing Board of Directors, our Finance and Investment Committee, Capital Campaign Cabinet, and Health Care Foundation Hospital Home Lottery Committee, as well as our various event and program committees.

As we conclude our 2009-2010 fiscal year, we are tremendously grateful for your continued support of adult health care. We look forward, with you, our donors, volunteers and friends, to the positive impact that our Foundation has on the health and vitality of all Newfoundlanders and Labradorians. Thank you, for helping us make a difference, one patient at a time.

Frank Fagan
Chair

Paul Snow
President and CEO

Making a *Difference* . . . with Medical Equipment and Technology



This is the first of three new cardiac catheterization (cath) laboratories installed at the General Hospital. This room contains highly-specialized cardiac equipment and technology such as x-ray and monitoring equipment and a monitor defibrillator. Cardiac catheterization, coronary angioplasty and insertion of permanent pacemakers take place in this procedure room.

The Health Care Foundation supports the greatest medical equipment requirements in the five adult hospitals in St. John's and area. It is also our privilege to support our health care professionals in their daily mission of enhancing adult health care in this province. Raising funds for vital medical equipment and technology enables our physicians, nurses and staff to use their skills and talents to the fullest. The equipment we fund is also critical to the training of students of Memorial University's Faculty of Medicine.

In 2009-2010, donations to the Health Care Foundation provided funding for equipment that included:

- A new cardiac catheterization laboratory and electrophysiology suite
- Geriatric Day Care equipment
- Patient monitors for CCU
- ICU equipment
- OR instruments
- Transport ventilator
- Dialysis Unit chairs
- Assistance to the Adult Cystic Fibrosis Clinic
- Orthopedic surgical equipment
- High-risk birthing beds



An electrophysiology procedure in the cardiac catheterization lab.



Clients of the Cardiac Rehabilitation Program.

Making a *Difference* . . . in Patient Comfort



Comfort in Care Grants

In 2009-2010, the Health Care Foundation's *Comfort in Care* program distributed thousands of dollars in grants to twelve hospital units and division areas. These items, utilized within the five adult hospitals supported by the Foundation, often provide the 'little extras' that make such a difference to patient care.

Items that were funded this past year include:

- TV/DVD units and carts for the Volunteer Resources Department at St. Clare's Mercy Hospital. These entertainment units with DVDs provide patients with something pleasant to pass the time, and are especially helpful for patients who spend extended time in hospital.
- Outdoor furniture, canopy and flowers for a garden, North 2B, Waterford Hospital. Having access to an outside garden area is beneficial to a patient's well-being, and on finer weather days, patients are escorted by staff to the garden to have the opportunity to enjoy its colour and beauty.
- A Nintendo Wii system, with games and accessories, for the Occupational Therapy Department, Dr. Leonard A. Miller Centre. These recreation items help occupational therapists use non-conventional approaches to patient therapy, adding an element of fun for patients, while boosting morale for all involved.

Comfort through Therapeutic Recreation

Therapeutic Recreation (TR) Outpatient Services is a social/recreation service of the Mental Health and Addictions Program. The program enables individuals to use their leisure time in a meaningful way by enhancing their physical, mental and social well-being. Services offered include one-on-one sessions to help individuals plan their leisure time; educational sessions on how to learn leisure skills and healthy lifestyles; and how to learn a new leisure/recreation skill, in a supportive environment. Examples of some of the activities include bowling, hiking, canoeing, curling, indoor walking and swimming.

Gloria Brown, Recreation Specialist with the Mental Health and Addictions Program, identified a need to provide a group activity that involved the outdoors. The TR program had been previously involved with a snowshoeing session with the City of St. John's Parks and Recreation Department, and participants enjoyed the activity so much, Gloria applied for a Comfort in Care grant to purchase therapeutic equipment. Gloria was successful in her spring 2009 grant application and the TR program received the required funding. Her group was then able to go snowshoeing together once a week last winter, out on the various trails in the St. John's area.



Snowshoeing at Octagon Pond, 2010.



Spring 2009 Comfort in Care Grant Ceremony.

Research that is Making a *Difference* . . .

The Health Care Foundation proudly supports local health research. Annually, we provide grant funding to encourage and support our local research staff of the St. John's adult hospitals. In this fiscal year, the Foundation funded six health research projects:

- Health, lifestyle and aging with multiple sclerosis (Dr. Michelle Ploughman)
- A new approach to time-based bone mineral density differences (Dr. C. Wesolowski and Dr. L. Ling)
- The impact of nutrition on the functional status of stroke patients (Ms. Suja Varghese)
- Is there a delay in contraction of the gluteus medius muscle of chronic low back pain patients during single leg stance? (Ms. Tracey Penney)
- Perceived barriers to pap test screening among women of Newfoundland and Labrador (Dr. V. Greenslade)
- A longitudinal study of the impact of health care reform on registered nurses working in acute care in Newfoundland and Labrador (Dr. D. Gregory - see research profile, below)



Dr. Deborah Gregory

Health system reform in Newfoundland and Labrador began with the first round of regionalization of health boards between 1995 and 1997. Dr. Deborah Gregory is a member of a team of researchers at Memorial University and Eastern Health that studied the impact of health system reform in acute care settings, from the perspective of registered nurses, from 1995 to 2005. The research findings were published as a supplement of the *Journal of Health Services Research and Policy* and disseminated at local, national and international levels.

A second transformation of the health system occurred in 2006 after government mandated a reduction of fourteen regional health boards to four regional integrated health authorities. In March of 2010, the research team of Dr. Gregory, Dr. Christine Way, Dr. Patrick Parfrey and Carol Negrijn, received a \$10,000 Health Care Foundation research grant to continue monitoring the impact of reform on registered nurses. The grant enabled the team to hire a part-time research assistant to coordinate the mailing of a province-wide survey and the collection and data entry of survey responses. The grant also provides the team with the resources to disseminate the findings to nurses.

Ongoing reform of health systems impacts registered nurses in many ways that, if better understood, could inform interventions

and programs designed to improve the work environment and work attitudes. Evidence-informed health policy decision-making is necessary to develop human resource management strategies aimed at enhancing the work environment, renewing trustful employment relationships and improving job satisfaction and organizational commitment levels, all of which could benefit the province's health system. Dr. Gregory says, "The Health Care Foundation's funding of health services and health policy research enables teams like ours to build on previous work and monitor changes over time in order to provide such evidence to inform policy. We are very grateful for the Foundation's financial support of this important research."

Staff Education

Continuing professional development and ongoing educational opportunities are vital for health care professionals to further their skills and knowledge. The Health Care Foundation encourages staff education by providing five annual staff scholarships to staff of St. John's adult hospitals. These scholarships allow staff to pursue post-secondary programs and degrees relating to their field of work. In 2009-2010 the following individuals received Health Care Foundation Staff Scholarships:

- Lisa Picco, Clinical Instructor, Centre for Nursing Studies – Master in Nursing
- Pamela Rose Ward, Nurse Educator, Centre for Nursing Studies – PhD in Medicine (Clinical epidemiology)
- Kathy Watkins, Nurse Educator, Centre for Nursing Studies – PhD in Medicine (Clinical epidemiology)
- Lynette McCarthy-Woodrow, Staff Nurse in Surgery, St. Clare's Mercy Hospital – Master in Nursing
- Michele Power, Education Consultant, HRPPD – Master in Nursing (see scholarship profile, below)

Michele Power – Scholarship Recipient

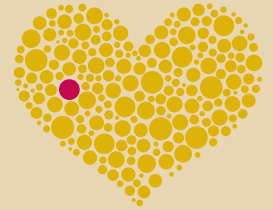
For many years, Michele Power had the desire to further her nursing education. However, with two school-aged children, limited time and financial commitments, completing a Master's degree in Nursing was not assured. Michele applied for a staff scholarship through the Health Care Foundation and was successful.

Upon graduation from Memorial's School of Nursing in 1991, Michele worked briefly at the General Hospital before she discovered neonatal nursing, an area in which she worked for 17 years. In 2001, while still nursing part-time, Michele became a part of sessional faculty with the Centre for Nursing Studies, and discovered another passion, nursing education. In 2008, she made the difficult decision to leave bedside nursing to take a position as an Education Consultant with Eastern Health's Learning & Development. "I have enjoyed this role tremendously, but the love of the clinical area continues to call me," says Michele. She will soon begin a position with the Centre for Nursing Studies and once again will have the opportunity to work in the clinical setting with students.

Michele's Masters program has allowed her deeper examination of other nursing areas and issues that she had not considered before; with the opportunity to network with fellow nurses from across the country and beyond.



Making a *Difference* . . . in Cardiac Care



**Give
from the
Heart**

Give from the Heart

Newfoundland and Labrador has the unfortunate distinction of having the highest per capita incidence of cardiovascular disease in Canada. Contributing factors include our aging population, lifestyle choices and the prevalence of certain genetic disorders. The number of cardiac patients is increasing significantly year to year, placing strain on existing cardiac services. The Cardiac Care Program is one of the most utilized services in our province's health care system. Approximately 600 surgeries, more than 6,000 stress tests, 60,000 ECGs, and more than 4,000 procedures in the cardiac catheterization laboratory (such as pacemaker implants and balloon angioplasties) are conducted each year.

Because cardiac disease is the #1 health issue in Newfoundland and Labrador, the Health Care Foundation made a commitment to the residents of this province to help provide excellence in cardiac care. On June 30, 2009, residents of Newfoundland and Labrador were urged to "Give from the Heart" and support a \$10 million fundraising campaign to purchase leading-edge cardiac equipment.

We are incredibly fortunate to have top-calibre cardiologists, cardiac surgeons and specialists in our province. The *Give from the Heart* campaign will assist in providing our health care professionals with the advanced technology and equipment they need to work to the fullest scope of their training and skills.



L-R: Hon. Edward Roberts, Honorary Chair, Give from the Heart campaign; John Lau, former President and CEO of Husky Energy; Janet Peddigrew, former Chair, Give from the Heart campaign; Dr. Barry Rose, Clinical Chief of Cardiology; Vickie Kaminski, President and CEO, Eastern Health.

On July 14, 2009, a reception was held to recognize the philanthropic spirit of Husky Energy to the *Give from the Heart* campaign. Husky Energy's support is funding the purchase of equipment for the Electrophysiology Suite in the catheterization lab of the General Hospital. Electrophysiology (EP) Studies are performed to diagnose and treat abnormalities of the electrical conduction system of the heart. EP Studies are often done for patients who may go on to receive an implanted defibrillator (ICD) or pacemaker.



On October 13, 2009, a reception was held to recognize the BMO Financial Group for their significant gift to the *Give from the Heart* campaign. BMO fosters a sincere and generous corporate and employee culture and embodies community service. Their financial gift will have a far-reaching impact on the health of people from communities throughout our province. It will assist in saving lives, will keep cardiac patients active and productive, and will restore quality of life. Pictured in this group photo are BMO Financial Group senior managers and staff members who attended the gathering.



The altruistic spirit of General Auxiliary Hospital members, past and present, has left a lasting impact on the quality of patient care in our province. With 40-50 actively involved members, all volunteers, the Auxiliary raises the majority of its money through the operation of the General Hospital Gift Shop, located in the Health Sciences Centre. We truly value our partnership with the Auxiliary, and wholeheartedly thank them for their commitment and support of the Foundation. The cheque presentation, to the *Give from the Heart* campaign, shown above, was made at the Auxiliary's AGM on October 20, 2009, and features members of the Auxiliary executive with Paul Snow, President and CEO, Health Care Foundation.

Making a *Difference* . . . in the Lives of Cardiac Patients



Kelly's Story

In February 2008, Newfoundland & Labrador researchers identified the genetic cause of ARVC*, a hereditary disease whose first and only symptom is typically a fatal heart attack. Thanks to this discovery, a blood test may now be able to determine a person's risk factor. Our province has the highest per capita incidence of ARVC in the world. Kelly Whelan lives with ARVC every day.

At eight months pregnant with her second child, Kelly was told by her physician that she had extra heartbeats, explaining that it may be a result of her pregnancy and would need to get it checked after the baby arrived. On her six-week checkup, Kelly still had the extra beats and was referred to a cardiologist where she was put through the paces of a stress test, an EKG and wore a holter monitor for a day. Days later, she was to be diagnosed with ARVC, a hereditary condition that her uncle also had, Kelly was devastated and felt she was living on borrowed time.

Dr. Josephson recommended a defibrillator implant and in April of 1997, Kelly and her husband flew to London, Ontario, where she had her first defibrillator implanted. The trip was a hard one to take, being away from her very young children. In January of 2000, Kelly had her second defibrillator implanted. Thankfully, Dr. Sean Connors was here in Newfoundland and would perform the procedure, so she didn't have to travel outside the province.

If it were not for the wonders of modern medicine I would not be here today," says Kelly. "Dr. Sean Connors and the cardiac cath lab team have been a blessing for me and my family. My children are grateful that mom has the implant and it's keeping me here."

*ARVC: Arrhythmogenic Right Ventricular Cardiomyopathy



Melody's Story

Imagine being told at the age of 16 that you have a cardiac condition for which there is no cure and surgery is the only option. Melody Schofield understands this all too well. After experiencing extreme and sharp chest pain, and a referral to a cardiologist, Melody was diagnosed with aortic valve regurgitation - a condition that occurs when the heart's aortic valve doesn't close tightly. Aortic valve regurgitation allows some of the blood that was just pumped out of the heart's main pumping chamber (left ventricle) to leak back into it. This information put Melody into a state of shock. Her cardiologist said her heart could be monitored, with surgery delayed as long as possible.

Two years went by, and Melody's physical condition deteriorated, laboring when breathing upon doing any exertion, requiring a lot of extra rest and in bed by 8 pm or she wouldn't have the energy to function. She missed a lot of school and her hobbies and activities came to a halt.

In late 2008, Melody's cardiologist determined that the time had come to consider surgery. In January of 2009, at the age of 18, Melody underwent surgery and had an Aortic Valve Replacement. After five days in hospital, Melody was released and registered for the Cardiac Rehabilitation Program, a carefully monitored exercise program for persons with cardiac conditions of all varieties. Melody remained in the program for several months.

Today, Melody is active once again, attending College of the North Atlantic, busy with her volunteer work, dance classes, her friends, family and beloved pets.



Henry's Story

Henry Butler is a 50-year old native of Corner Brook who has lived in Mount Pearl for 25 years. Henry's family has a long history of heart disease. His father had seven heart attacks and his paternal grandfather died at a very young age from heart disease. His own first sign of trouble was at the age of 42, experiencing shortness of breath and tightness in his chest. At that time he was found to have high cholesterol, high blood pressure and was overweight and inactive.

Henry was diagnosed with coronary artery disease and required two stent insertions, performed by Dr. Calvin MacCallum at the cardiac catheterization (cath) lab in the General Hospital. Two years later he required three additional stents.

Today, Henry is in good health and has nothing but kind words for Dr. MacCallum and the staff of the cath lab, as they have given him back his quality of life. Henry and Dr. MacCallum have an excellent rapport as he takes Dr. MacCallum's advice 'to heart' and is careful with his diet and is physically active. The people and technology at the cath lab have allowed him to pursue his hobbies of photography, kayaking, hiking, carpentry and painting.

Henry knows that despite his best efforts to remain healthy, he will require further treatments at the cath lab. Henry happily supports the efforts of the *Give from the Heart* campaign to raise money for the cardiac care program.



Making a *Difference* . . . in Emergency Response

Computer Aided Dispatch System

The Computer Aided Dispatch system is a standard of practice in every other province in Canada, except Newfoundland and Labrador. The Health Care Foundation saw this need, and assisted in the funding of this important piece of medical equipment, through the 2009 *Eleganza* Gala. The CAD system is used for receiving, processing and dispatching requests for ambulance transport, providing efficiency and effectiveness of ambulance dispatch, and utilizes software and programs to objectively triage calls and recommend the appropriate response agency.



Experience with these systems across North America has been positive, with a reported increase of 50% with patient survivability, a decrease of 50% with red lights and siren response, and a decrease of 78% with ambulance accidents. This system enables a faster response by identifying the closest ambulance and providing the mapping and routing information.

The CAD system will also be able to track and monitor patient movements and identify gaps or areas for attention with infectious disease transmission. With a CAD-coordinated dispatch system, resources can be quickly mobilized during periods of mass casualty or high influx of ambulance calls.

The sophisticated technology of the Computer Assisted Dispatch system will be of tremendous benefit to the residents of Newfoundland and Labrador.



The new Computer Assisted Dispatch system is similar to the system in this photo.



The CAD system will provide a faster response by identifying the closest ambulance and providing the mapping and routing information.



Members of the Eastern Health Paramedicine and Medical Transport team at the 2009 Eleganza Gala.

Making a *Difference* . . . in Women's Health

A Celebration of Generosity

On October 2, 2009, the Health Care Foundation held a special reception to recognize the Canadian Breast Cancer Foundation-Atlantic Region and CIBC for their generous contributions toward the purchase of a full-field digital mammography unit for the Breast Screening Program of Newfoundland and Labrador. CIBC donated \$150,000 towards the unit and the Canadian Breast Cancer Foundation-Atlantic provided an additional \$100,000.

Mammograms are an important first step in the early detection and treatment of breast cancer. The Breast Screening Program provides mammography services, clinical breast examinations and breast health awareness for women aged 50 years and older. Dr. Nancy Wadden, Medical Director, Breast Screening Program for NL, says, "Full-field digital mammography is the most advanced mammography technology available. It provides a clearer, crisper image, and digital images are electronically filed and stored on a computer which greatly speeds up the review process."

Newfoundland and Labrador is the first province in Canada to have 16 digital mammography units in eleven major centres across the province.

We are very grateful to CIBC and the Canadian Breast Cancer Foundation-Atlantic Region for supporting this advanced technology to benefit the women of our province.

One of the two full-field digital mammography units at the Major's Path site.



Mammography Technologist Mary Warford operates one of the units at the Provincial Breast Screening Program's Major's Path site.



CIBC and the Canadian Breast Cancer Foundation-Atlantic Region cheque presentations to the Health Care Foundation, toward the purchase of a digital mammography unit.

Fundraising Initiatives that are Making a *Difference* . . .

Brunch with the Bags™

The Health Care Foundation's third annual *Brunch with the Bags™* event was held May 16, 2009 at the Delta St. John's Hotel, raising \$60,000 in proceeds to purchase a new Urodynamics Testing System for the Women's Health program. Mothers and daughters, colleagues, friends and neighbours got together and thoroughly enjoyed a fun-filled afternoon that included a delicious 3-course brunch, games, prizes, as well as a fantastic array of silent and live auction items. Our

sincere thanks to *Brunch with the Bags™* Chair, Debbie Patten, and the volunteer committee, our sponsors and volunteers, event emcee Sheila Williams and live auctioneer and honorary patron, Sheilagh Guy-Murphy, for their unwavering support to Women's Health.

Brunch with the Bags™ is proudly presented by Fortis Properties.



Brunch with the Bags™ Live Auction Items.

Hearty Feast Golf Dinner™

In conjunction with the Health Care Foundation's Annual Charity Golf Tournament, Johnson Insurance proudly presented the second annual 'Hearty Feast' Pre-tournament Dinner at the Holiday Inn on June 17, 2009. Our guests were treated to a traditional-style Newfoundland kitchen party with local roots band Siochána, and had a fabulous meal with prizes and the opportunity to bid on a wide selection of silent and live auction items. All proceeds supported the Health Care Foundation and our provincial cardiac care program.



Dr. Oscar Howell, Eastern Health Vice President, Medical Services & Diagnostics (who plays a mean Ugly Stick!) and event emcee Jim Payne entertain at the 2009 Hearty Feast.

Health Care Foundation Hospital Home Lottery

The second Health Care Foundation Hospital Home Lottery was launched on April 1, 2009, generating almost \$800,000 in proceeds in support of the cardiac care program, the provincial referral centre for cardiac surgery and invasive cardiac diagnostic and interventional procedures. The Hospital Home Lottery grand prize, a beautiful 3200 square foot, custom-built Rockwood Home, was won by David Dobbin of St. John's. We are delighted that all 30,000 available tickets were sold in advance of the Early Bird deadline, and congratulate all 1500 winners. On behalf of the patients of Newfoundland & Labrador who will benefit, thank you for your continued support and commitment!



Stay tuned for news on our 2011 Lottery!



David Dobbin (centre), arriving at the Showhome and is congratulated by Paul Snow (left), Health Care Foundation President & CEO, Frank Fagan (right), Chair of the Foundation, and Marie Bishop (foreground), Interior Designer.



The Grand Prize Showhome.

Fundraising Initiatives that are Making a *Difference* . . .

Annual Charity Golf Tournament

Proudly sponsored by Canadian Medical Products and SCA/Tena, the Health Care Foundation's Annual Charity Golf Tournament is one of our major fundraisers of the calendar year. Each year, our generous supporters rally together so that we can host one of the largest and most entertaining tournaments in Newfoundland and Labrador. On June 18, 2009, our annual tournament and luncheon was held at *The Wilds at Salmonier River*, and raised proceeds of \$95,000 for the provincial cardiac care program. Our sincere thanks to Dean Roebothan, golf committee Chair, the volunteer organizing committee, our sponsors, supporters, donors and Bell Aliant Pioneers for their amazing commitment and dedication to this wonderful event. Together

we are all working to make a difference in adult health care, benefitting patients in Newfoundland and Labrador.



Fred Hutton emcees the 2009 Golf Luncheon.



'Beat the Pro' with Brad Gushue.

Coast Memories of Christmas

A grand time was had by all during the *Coast Memories of Christmas* event, December 4, 2009 at the Avalon Mall, in support of the Health Care Foundation's *Tree of Memories* appeal. The day was filled with live entertainment and the sharing of Christmas memories and stories live on Coast 101.1 FM. Special thanks to our speakers, performers, the Bell Aliant Pioneers, A Special Touch, Eastern Audio, Coast 101.1, and to all who donated to the Health Care Foundation, supporting the *Tree of Memories* and remembering loved ones during the Christmas season.



Frank Fagan, Chair of the Health Care Foundation officially launching the Coast Memories of Christmas, December 4, 2009.



Greg Malone joined Andy Newman and Denielle Hann live on Coast, and shared his Christmas memories of growing up in St. John's.

An Evening with the Stars

The annual *Eleganza Gala* is one of the Health Care Foundation's signature fundraising events. Since 1987, we have delighted our guests by taking them on exciting journeys around the world with show-stopping event themes. The 22nd annual Gala, held October 17, 2009 at the Delta St. John's Hotel, was no exception, with the glitz and glam of Hollywood - *An Evening with the Stars*. Proudly presented by Bell Aliant, the 2009 *Eleganza* welcomed more than 500 guests, and a phenomenal \$254,300 in proceeds was raised to assist in the purchase of a Computer Aided Dispatch System (CAD), new technology for Eastern Health's Emergency Program, that will enable a faster, more efficient response to emergency calls. Our thanks to all involved with the planning of *Eleganza 2009* - Chair Debbie Patten and the volunteer planning committee, event emcee Andy Newman, auctioneer Dave Greene, our patrons, sponsors, donors and volunteers. It's amazing that this one event has raised in excess of \$1.75 million cumulatively over the past 22 years. *Bravo!*



2009 *Eleganza* cheque presentation with Frank Fagan, Chair of the Health Care Foundation, Corey Banks, Division Manager and EMS Chief, Paramedic & Medical Transport, Debbie Patten, Chair of the 2009 *Eleganza* Gala, flanked by members of the Eastern Health Paramedic Team.

Volunteers and Friends Making a *Difference* . . .

Beothuck Street Players

The Health Care Foundation is truly grateful for the generosity and kindness of community-minded supporters like the Beothuck Street Players Theatre Company. A portion of profits from ticket sales of their September, 2009 production of *Tuesdays with Morrie*, were donated to the Health Care Foundation.



L-R: Ted Quinlan, Clar Doyle and Jason Card of Beothuck Street Players Theatre Company present a cheque to Paul Snow, President and CEO, Health Care Foundation.



2009 Team Mental Health NL.

Tri for Health

The Health Care Foundation is appreciative to *Team Mental Health NL* who completed the St. John's Triathlon on August 9, 2009, to raise money for therapeutic recreation programs of the Waterford Hospital, and to raise awareness of mental health issues. The team more than doubled their fundraising goal, raising more than \$8300. Funds raised went to purchase exercise and recreation equipment to assist those with mental illness to get active. We are proud of *Team Mental Health NL* for this fantastic achievement and sincerely thank everyone who supported this project.

IODE Shore of Nine Points

The IODE Shore of Nine Points is a busy group. From sponsoring needy families at Christmas, to purchasing hygiene kits for the Street Outreach Program, to adopting a classroom in Northern Labrador, this group embodies its slogan, 'Women dedicated to a better Canada.' Earlier this year, the Chapter donated funds to the Health Care Foundation's *Comfort in Care* program, toward the purchase of a sleeper chair. Hospital sleeper chairs can be comforting for the friends and families of patients who want to remain with their loved ones through the night. The Health Care Foundation is most grateful to the membership for their generosity and continued commitment to adult health care.



Members of the IODE Shore of Nine Points.

House-Blackwood Rotary Gym

On February 9, 2010, a special ceremony was held to commemorate the naming of the *House-Blackwood Rotary Gym*, located in the Waterford Hospital. The gym is named in honor of the Caribou Group of the Rotary Club of St. John's, and two long-serving members, Phonse House and Dr. John Blackwood. For more than 60 years, the Caribou Group of Rotary has chosen the Waterford Hospital as its charity of choice.



Members of the Caribou Group of the Rotary Club of St. John's with House and Blackwood family members.

Donors and Friends Making a *Difference* . . .

Matthews Family Donation

When their mother Mary passed away, brothers Mark and Paul Matthews wanted to honor their mother's memory by making a donation to assist in the purchase of a ventilator for respiratory therapy/critical care at St. Clare's Mercy Hospital. In consultation with staff, a Newport HT50 ventilator, the first of its kind at St. Clare's, was purchased. This new piece of equipment is a life-support transport unit that enables critically-ill patients to be moved from one area of the hospital to another, with no disruptions to the mechanical breathing patterns which are tailored by a respiratory therapist for each patient. Since its introduction, the unit has been used on an almost-daily basis by the respiratory therapists for moving patients to and from the intensive care unit for diagnostic procedures. Although Mrs. Matthews did not have access to the new equipment during her stay at St. Clare's, the Newport ventilator will improve the comfort and dignity of many other patients. We are grateful to the Matthews family for this generous gift.



Mark, Barbara and Paul Matthews with staff of St. Clare's ICU and the Eastern Health respiratory department. On the cart's top level is the Newport HT50 ventilator, donated by the Matthews family.

Sofa Donation in Memory

For the exceptional, loving care that their parents received from the doctors, nurses and staff at the General Hospital, Donald and Lisa Hurd wanted to do something special to show their sincere appreciation. The Hurds purchased a sofa, and had it placed on the main floor of the Health Sciences Centre, to enhance the comfort of visitors and patients. Since January, 2010, visitors, patients and staff are enjoying the opportunity to stop and rest awhile. Although Sydney & Lilian Hurd and Heini & Franz Richter are no longer with us, their memory lives through their children's generous donation.



Donald and Lisa Hurd on the sofa they donated in memory of their parents.

Breakfast with Santa

For several days in December, Santa's elves are busy serving up delicious hot breakfasts to Eastern Health staff. *Breakfast with Santa* is an annual Christmas tradition at the five adult hospitals the Health Care Foundation serves, and every year Foundation staff and members of the Board, along with senior management of Eastern Health, visit the sites and serve breakfast, prepared and graciously donated by Morrison-Health Care Food Services. Of course, the highlight of the breakfast is a visit from the jolly old elf himself! All proceeds from *Breakfast with Santa* are in support of the Health Care Foundation. Our thanks to Morrison-Health Care Food Services, the planning committee, our volunteers and Eastern Health management and staff.



Santa giving out goodies to staff at the Dr. Leonard A. Miller Centre.

Divas and Dudes who Made a Difference

On February 27, 2010, the Dialysis team at the General and Waterford Hospitals held a special fundraising event, 'Divas and Dudes Dancing for Dialysis,' and raised net proceeds of more than \$10,000. Monies from this event are supporting the purchase of new televisions for the Dialysis Units at both facilities, for the use of patients receiving dialysis treatment. Many patients spend long hours, up to several times a week, being dialyzed, and having access to a television to pass the time, benefits their well-being. Sincere thanks to all involved, especially Linda Ivany, Manager of Dialysis for St. John's hospitals, as well as the committee who spent countless hours organizing the event. We also want to acknowledge the efforts of the Mount Pearl School of Dance Senior Performing Group, the Barbara Ashley School of Dance Performing Group and all those who generously donated prizes for the silent auction, or made monetary donations.



Thank You for Making a *Difference* . . .

The Health Care Foundation has one vision – contributing to a healthier future by raising funds to enhance patient care within Newfoundland and Labrador. Our Foundation, through our friends and supporters, raise money for vital medical equipment, research and education, and patient comfort items to help provide

the residents of our province with quality health care. With your support, the Health Care Foundation has raised more than **\$13 million** since our amalgamation in 2002. To our donors, volunteers, partners and sponsors, **thank you** for choosing to support adult health care!

Health Care Foundation of St. John's Inc. Non-consolidated Statement of Operations

Year Ended March 31			2010	2009
	Operating Fund	Restricted Fund	Total	Total
Revenue				
Annual giving	\$ 389,313	\$ 53,601	\$ 442,914	\$ 437,178
Major gifts	62,606	1,068,307	1,130,913	858,644
Planned giving	27,983	108,048	136,031	271,590
Special events	523,555	-	523,555	477,461
Hospital Home Lottery	2,710,009	-	2,710,009	378,902
Interest	16,631	-	16,631	62,802
	<u>3,730,097</u>	<u>1,229,956</u>	<u>4,960,053</u>	<u>2,486,577</u>
Expenditures				
Salaries and benefits	454,530	-	454,530	436,481
Annual giving	115,931	-	115,931	113,952
Major gifts	26,372	-	26,372	8,664
Planned giving	1,229	-	1,229	3,250
Special events	137,036	-	137,036	148,900
Hospital Home Lottery	1,911,413	-	1,911,413	-
Administration	109,954	-	109,954	63,623
Communications	216,002	-	216,002	93,439
Amortization	3,834	-	3,834	4,784
	<u>2,976,301</u>	<u>-</u>	<u>2,976,301</u>	<u>873,093</u>
Excess of revenue over expenditures before undernoted contributions	<u>753,796</u>	<u>1,229,956</u>	<u>1,983,752</u>	<u>1,613,484</u>
Grants				
Grants to Eastern Health	168,410	1,387,820	1,556,230	1,028,789
Scholarships and grants	-	-	-	112,000
	<u>168,410</u>	<u>1,387,820</u>	<u>1,556,230</u>	<u>1,140,789</u>
Excess of revenue over expenditures (expenditures over revenue)	<u>\$ 585,386</u>	<u>\$ (157,864)</u>	<u>\$ 427,522</u>	<u>\$ 472,695</u>

ANNUAL REPORT 2009 - 2010

Health Care Foundation Board of Directors 2009 - 2010

Frank Fagan, <i>Chair</i>	Edwin Drover
David Jones, <i>Secretary</i>	Shannie Duff
Jocelyn Perry, <i>Treasurer</i>	Nora Duke
Sandra Avery	Debbie Patten
Norma Baker	Janet Peddigrew
Dr. Ford Bursey	Ida Pike
Margaret Butt	Donna Stone
Geoffrey Carnell	

Committees of the Board

Executive Committee

Frank Fagan, *Chair*
David Jones, *Secretary*
Jocelyn Perry, *Treasurer*
Edwin Drover
Paul Snow, *President and CEO*

Finance and Audit Committee

Jocelyn Perry, *Chair*
Steve Wedgwood
Lloyd Osmond
Jeff Benson
Roger Cooper

Health Care Foundation Team

Paul Snow, *President and CEO*
Kathryn Budgell
Anne Downton
Lisa Gushue
Jennifer Lewis
Gennette Martin
Michelle Puddicombe
Sonya Smith
Celina Stoyles

Save the Date

**BRUNCH
WITH THE BAGS**
May 7, 2011

**HEARTY FEAST & ANNUAL
CHARITY GOLF TOURNAMENT**
June 22 & 23, 2011

ELEGANZA 2011
October 22, 2011

Front Cover Photo:

Making a Difference on St. Clare's 7 East

L-R: Ann Woodrow, LPN; Aileen Kenny, St. Clare's Mercy Hospital volunteer; Daniel Hickey, patient; Margaret Ryan, St. Clare's Mercy Hospital volunteer; Janet Allen, LPN.

Annual Report Photo Credits:

Catherine Barrett, Scott Bowering, Gord Case, Paul Daly, Sharon Dawe, Randy Dawe, Denise Dunne, Lisa Gushue, Ashley Miller Matthews.

HEALTH CARE FOUNDATION



The Health
Care Foundation
is Moving!

As of December 1, 2010
our new address will be:
Suite 103
71 Goldstone Street
St. John's, NL
A1B 5C3

All contact phone numbers will remain the same.
For information please call 777.5901.

www.healthcarefoundation.ca

The Health Care Foundation is the official fundraising organization for the five adult acute care hospitals in the greater St. John's area. A registered charitable organization, governed by a volunteer board of directors, the Health Care Foundation raises funds to purchase vital medical equipment and technology, enhance patient care and comfort, and to fund health research and education. Your support benefits the patients of the General Hospital, St. Clare's Mercy Hospital, Dr. Leonard A. Miller Centre, Waterford Hospital and the Dr. Walter Templeman Health Centre. Collectively, these hospitals provide services for 1.2 million patient encounters annually, offering specialized medical services to the entire province. Together they form one of the largest academic health centres in Canada.